

Magnetic Encoder System BML SL1

Absolute linear measuring system with IO-Link interface and condition monitoring

- Simple connection via IO-Link
- Up to 8 m travel sensing with high accuracy
- High flexibility thanks to comprehensive parameterizing functions as well as diagnostics and condition information via IO-Link
- Easy to install, reliable operation thanks to generous read distance of up to 1.3 mm
- Optional analog measurement output for control applications



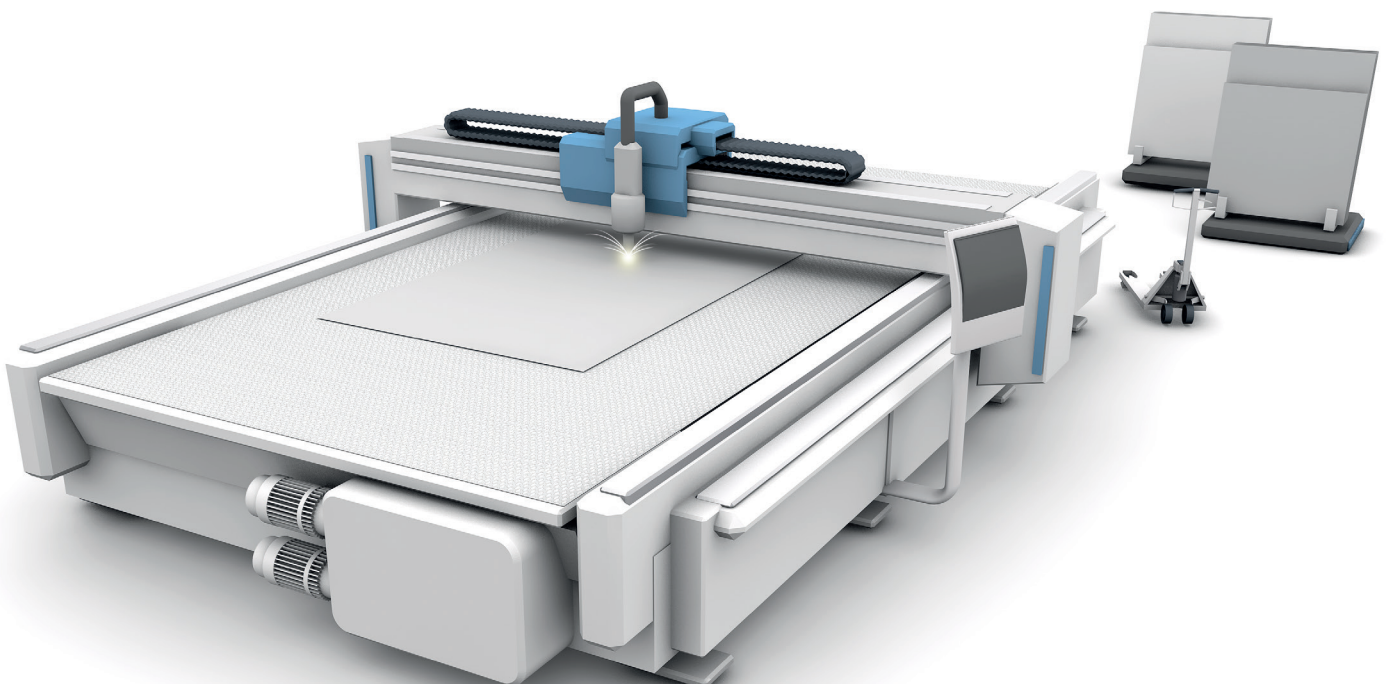
The BML SL1 absolute measuring system stands out in any application where high absolute accuracy of current and limit positions is required. It was developed for measuring and positioning applications in any industry, and combines the advantages of a magnetic encoder system with the most innovative interface in the automation world.

The position information is conveniently output through the integrated IO-Link interface. An optional analog interface is available for control applications.

IO-Link offers parameterizing and diagnostic functions including condition monitoring of the measuring system.

When other measuring systems are too large, too slow, too imprecise or too inflexible, you can count on the BML SL1, and benefit from the simple connection to IO-Link systems.

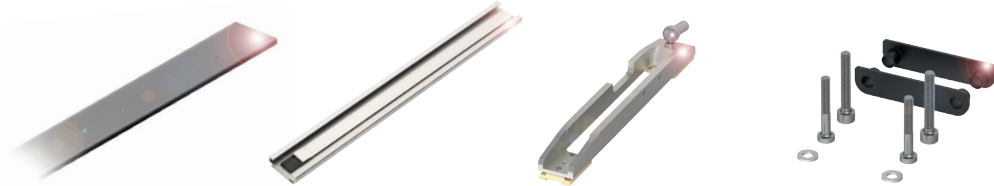
Whether linear or rotary motion, position or angle measurement, format changes, short or long distances – this system is a simple and economical solution for countless applications.





Series	BML SL1...	BML SL1...	BML SL1...
Output signal	IO-Link	Absolut: IO-Link, additional analog	real-time signal (sin/cos)
	BML06HE	BML06HC	BML06FU
Resolution	1 µm	1 µm	1 µm
Max. measuring length	8.19 m	8.19 m	8.19 m
Overall system accuracy	±15...100 µm (depending on mechanical installation)	±15...100 µm (depending on mechanical installation)	±15...100 µm (depending on mechanical installation)
Supply voltage	18...30 V DC	18...30 V DC	18...30 V DC
Operating temperature	-20 °C...+70 °C	-20 °C...+70 °C	-20 °C...+70 °C
Degree of protection	IP67	IP67	IP67
Housing material	Zinc diecasting , stainless steel	Zinc diecasting , stainless steel	Zinc diecasting , stainless steel

Accessories



Series	Magnetic tape	Guide rail	Sliding carriage	Mounting accessories
	BML074F	BAM01N4	BAM021H	BAM02YC
Length	1 m *	3 m *		
Material	Rubber ferrite, stainless steel	Aluminum	Aluminum	

* Other lengths on request.

Connector



Type	5 m cable PUR (black) with M12 female, 12-pin (straight)	10 m cable PUR (black) with M12 female, 12-pin (straight)	5 m cable PUR (black) with M12 female and M12 male, 4-pin (straight)	10 m cable PUR (black) with M12 female and M12 male, 4-pin (straight)
	BCC09MY	BCC09MZ	BCC039P	BCC06WR

Other lengths on request.

Services



Service – You can rely on our support over the entire life cycle of our products and solutions: Including the design and planning of your projects, testing and setup on site, and training and support. For more information, visit us online at www.balluff.de/services

www.balluff.com

Balluff GmbH Schurwaldstrasse 9 73765 Neuhausen a.d.F. Germany Phone +49 7158 173-0 Fax +49 7158 5010 balluff@balluff.de